

CANADA'S LARGEST COLLECTION OF OPERATIONAL HISTORICAL TANKS AND ARMoured VEHICLES



ONTARIO REGIMENT MUSEUM

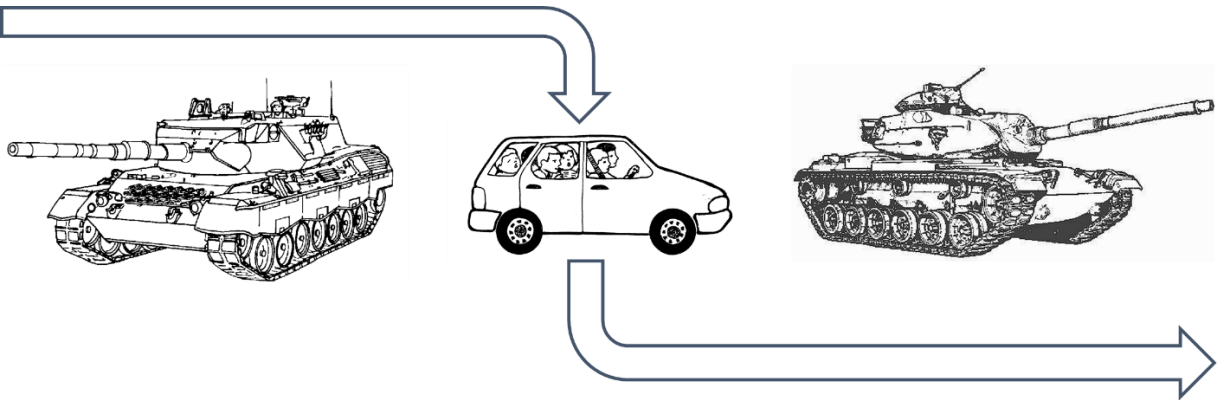


AN ACCREDITED CANADIAN
ARMED FORCES MUSEUM

THE ONTARIO REGIMENT (RCAC)
REGIMENTAL MUSEUM

Tank Trek

Route Map and Vehicle Recognition Guide



Welcome to the Ontario Regiment Museum's Tanker Trek

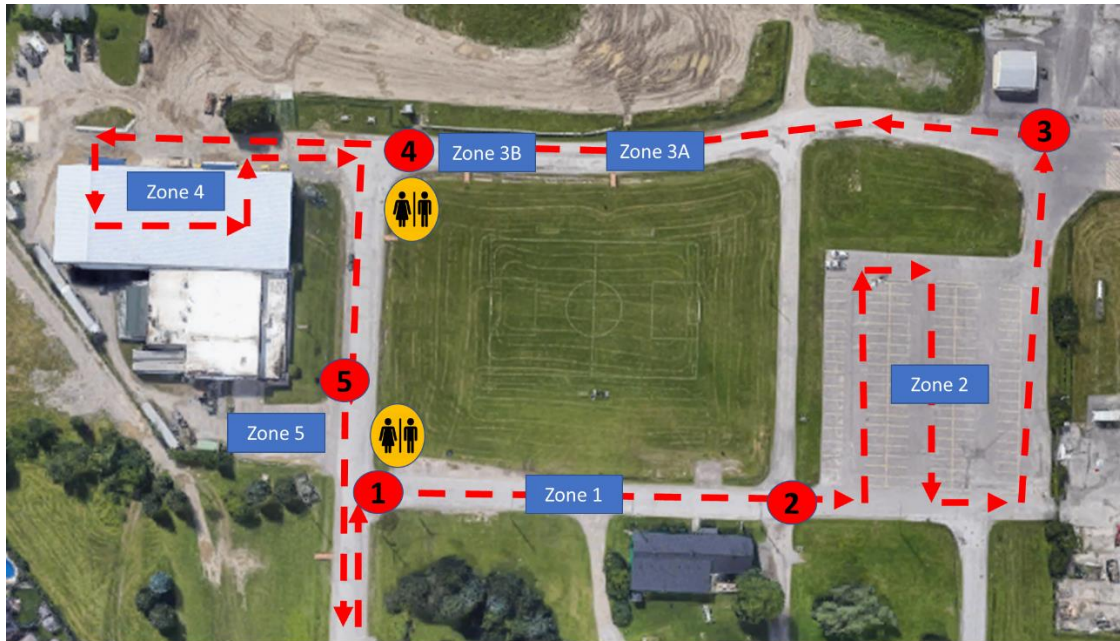
First of all, a big Thank You for coming to visit. We are happy to take this opportunity to show our tanks and military vehicles in a new way.

The Tanker Trek is a self-guided tour through the museum grounds in small convoys of five or less vehicles. The Trek is composed of 5 zones; three of which are static displays, one is a tank arena show, and the last is the gift shop. Each zone should take approximately 15 minutes. There is an audio file for each static display zone. In between each zone, there is a Traffic Control (TC) point where your convoy will regroup and wait until the next zone is free. These TCs will be manned by Museum TC staff.

Just a few things to keep in mind:

- Follow the assigned route only.
- Drive slowly (10 kmh) and maintain separation (2 m) from other vehicles.
- Follow all instructions from Museum Traffic Control Staff.
- Do not leave your vehicle.
- If you encounter any difficulties or emergencies, stay in your vehicle and communicate with a museum staff member for assistance.

Tanker Trek Route Map



1		Enter from Stevenson 10-15minutes before the time on your ticket.
2	1	Hold at TC 1 until Zone 1 is free.
3	Zone 1	Zone 1 – Wheeled Vehicles
4	2	Hold at TC 2 until Zone 2 is free.
5	Zone 2	Zone 2 – Heavy Armour
6	3	Hold at TC 3 until Zone 3 is free.
7	Zone 3A	Zone 3A – Angle Parking for Tank Area and Show
8	Zone 3B	Zone 3B – Watch the show again and hear the history of the museum
9	4	Hold at TC 4 until Zone 4 is free.
10	Zone 4	Zone 4 – Drive through MVCC
11	5	Vehicle can leave directly or visit Gift Shop
12	Zone 5	Gift Shop Pick Up and Donations
		Exit to Stevenson

Zone 1 - Light Vehicles Recognition Guide

	<p>Willys MB Jeep</p> <table border="1"> <tbody> <tr> <td>Country</td> <td>US</td> <td>Manufacturer</td> <td>Willys</td> <td>Manufactured</td> <td>1940 – 1945</td> </tr> <tr> <td>Engine</td> <td>Gas, 60 hp</td> <td>Weight (kg)</td> <td>1,113</td> <td>Max. Speed</td> <td>105 kmh</td> </tr> <tr> <td>Crew</td> <td>1 + 3</td> <td>Weapons</td> <td>N/A</td> <td></td> <td></td> </tr> </tbody> </table>	Country	US	Manufacturer	Willys	Manufactured	1940 – 1945	Engine	Gas, 60 hp	Weight (kg)	1,113	Max. Speed	105 kmh	Crew	1 + 3	Weapons	N/A		
Country	US	Manufacturer	Willys	Manufactured	1940 – 1945														
Engine	Gas, 60 hp	Weight (kg)	1,113	Max. Speed	105 kmh														
Crew	1 + 3	Weapons	N/A																
	<p>M38, M38A1</p> <table border="1"> <tbody> <tr> <td>Country</td> <td>US</td> <td>Manufacturer</td> <td>Ford</td> <td>Manufactured</td> <td>1949-1957</td> </tr> <tr> <td>Engine</td> <td>Gas, 60hp</td> <td>Weight (kg)</td> <td>1,200</td> <td>Max. Speed</td> <td>97kmh</td> </tr> <tr> <td>Crew</td> <td>1 + 4</td> <td>Weapons</td> <td>N/A</td> <td></td> <td></td> </tr> </tbody> </table>	Country	US	Manufacturer	Ford	Manufactured	1949-1957	Engine	Gas, 60hp	Weight (kg)	1,200	Max. Speed	97kmh	Crew	1 + 4	Weapons	N/A		
Country	US	Manufacturer	Ford	Manufactured	1949-1957														
Engine	Gas, 60hp	Weight (kg)	1,200	Max. Speed	97kmh														
Crew	1 + 4	Weapons	N/A																
	<p>M151 MUTT</p> <table border="1"> <tbody> <tr> <td>Country</td> <td>US</td> <td>Manufacturer</td> <td>Ford</td> <td>Manufactured</td> <td>1959-1982</td> </tr> <tr> <td>Engine</td> <td>Gas, 71hp</td> <td>Weight (kg)</td> <td>1,100</td> <td>Max. Speed</td> <td>105kmh</td> </tr> <tr> <td>Crew</td> <td>1 + 3</td> <td>Weapons</td> <td>N/A</td> <td></td> <td></td> </tr> </tbody> </table>	Country	US	Manufacturer	Ford	Manufactured	1959-1982	Engine	Gas, 71hp	Weight (kg)	1,100	Max. Speed	105kmh	Crew	1 + 3	Weapons	N/A		
Country	US	Manufacturer	Ford	Manufactured	1959-1982														
Engine	Gas, 71hp	Weight (kg)	1,100	Max. Speed	105kmh														
Crew	1 + 3	Weapons	N/A																
	<p>Iltis</p> <table border="1"> <tbody> <tr> <td>Country</td> <td>Canada</td> <td>Manufacturer</td> <td>Bombardier</td> <td>Manufactured</td> <td>1984-1988</td> </tr> <tr> <td>Engine</td> <td>Gas, 75hp</td> <td>Weight (kg)</td> <td>1,300</td> <td>Max. Speed</td> <td>130kmh</td> </tr> <tr> <td>Crew</td> <td>1 + 3</td> <td>Weapons</td> <td>N/A</td> <td></td> <td></td> </tr> </tbody> </table>	Country	Canada	Manufacturer	Bombardier	Manufactured	1984-1988	Engine	Gas, 75hp	Weight (kg)	1,300	Max. Speed	130kmh	Crew	1 + 3	Weapons	N/A		
Country	Canada	Manufacturer	Bombardier	Manufactured	1984-1988														
Engine	Gas, 75hp	Weight (kg)	1,300	Max. Speed	130kmh														
Crew	1 + 3	Weapons	N/A																
	<p>M37 Dodge</p> <table border="1"> <tbody> <tr> <td>Country</td> <td>US</td> <td>Manufacturer</td> <td>Dodge</td> <td>Manufactured</td> <td>1951-1968</td> </tr> <tr> <td>Engine</td> <td>Gas, 78hp</td> <td>Weight (kg)</td> <td>2,700</td> <td>Max. Speed</td> <td>89kmh</td> </tr> <tr> <td>Crew</td> <td>2</td> <td>Weapons</td> <td>N/A</td> <td></td> <td></td> </tr> </tbody> </table>	Country	US	Manufacturer	Dodge	Manufactured	1951-1968	Engine	Gas, 78hp	Weight (kg)	2,700	Max. Speed	89kmh	Crew	2	Weapons	N/A		
Country	US	Manufacturer	Dodge	Manufactured	1951-1968														
Engine	Gas, 78hp	Weight (kg)	2,700	Max. Speed	89kmh														
Crew	2	Weapons	N/A																
	<p>M35</p> <table border="1"> <tbody> <tr> <td>Country</td> <td>UK</td> <td>Manufacturer</td> <td>Daimler</td> <td>Manufactured</td> <td>1952 – 1971</td> </tr> <tr> <td>Engine</td> <td>Gas, 130 hp</td> <td>Weight (kg)</td> <td>3,350</td> <td>Max. Speed</td> <td>93 kmh</td> </tr> <tr> <td>Crew</td> <td>2</td> <td>Weapons</td> <td>N/A</td> <td></td> <td></td> </tr> </tbody> </table>	Country	UK	Manufacturer	Daimler	Manufactured	1952 – 1971	Engine	Gas, 130 hp	Weight (kg)	3,350	Max. Speed	93 kmh	Crew	2	Weapons	N/A		
Country	UK	Manufacturer	Daimler	Manufactured	1952 – 1971														
Engine	Gas, 130 hp	Weight (kg)	3,350	Max. Speed	93 kmh														
Crew	2	Weapons	N/A																



LSVW (Light Support Vehicle Wheeled)

Country	Italy	Manufacturer	IVECO	Manufactured	1993 - 1997
Engine	Diesel, 115 hp	Weight (kg)	3,350	Max. Speed	100 kmh
Crew	1 + 1	Weapons	N/A		



M936 5 ton

Country	US	Manufacturer	AM General	Manufactured	1982 – 1987
Engine	Diesel, 240 hp	Weight (kg)	9,900	Max. Speed	88 kmh
Crew	2	Weapons	N/A		



Scania SBAT

Country	Sweden	Manufacturer	Scania	Manufactured	1975 – 1981
Engine	Diesel, 296 hp	Weight (kg)	15,000	Max. Speed	85 kmh
Crew	1 + 2	Weapons	N/A		

Zone 2 – Heavy Armour



Leopard 1

Country	Germany	Manufacturer	Krauss-Maffei	Manufactured	1965 – 1984
Engine	Diesel, 820 hp	Weight (kg)	42,200	Max. Speed	65 kmh
Crew	4	Weapons	105mm Main Gun, 2 X 7.62mm MG		

There are 2 Leopards present: Belgium Leopard 1A5, and Canadian Leopard 1C2.



M60A3 Patton

Country	US	Manufacturer	Chrysler	Manufactured	1960 – 1983
Engine	Diesel, 750 hp	Weight (kg)	52,600	Max. Speed	48 kmh
Crew	4	Weapons	105mm Main Gun, .50 cal MG, 7.62mm MG		

The Museum has two M60A3s; one in USMC (Tan) and one in US Army (Green)



FV4201 Chieftain

Country	UK	Manufacturer	British Leyland	Manufactured	1963 – 1986
Engine	Gas, 158 hp	Weight (kg)	56,000	Max. Speed	42 kmh
Crew	2	Weapons	120 mm Main Gun, 2 X 7.62mm MG		

There are three Chieftains at the Museum; two MK10s in Berlin paint scheme and a MK11 in green.

Zone 3 – Tank Arena

Pull in and angle park under direction of the staff. Then enjoy the show.

Zone 4 – Military Vehicle Conservation Centre

	<p>FV432</p> <table border="1"> <thead> <tr> <th>Country</th> <td>UK</td> <th>Manufacturer</th> <td>BAE</td> <th>Manufactured</th> <td>1966 – 1971</td> </tr> </thead> <tbody> <tr> <th>Engine</th> <td>Gas, 240 hp</td> <th>Weight (kg)</th> <td>15,280</td> <th>Max. Speed</th> <td>52 kmh</td> </tr> <tr> <th>Crew</th> <td>2 + 10</td> <th>Weapons</th> <td colspan="3">7.62mm MG, 2X3 smoke Launchers</td> </tr> </tbody> </table>	Country	UK	Manufacturer	BAE	Manufactured	1966 – 1971	Engine	Gas, 240 hp	Weight (kg)	15,280	Max. Speed	52 kmh	Crew	2 + 10	Weapons	7.62mm MG, 2X3 smoke Launchers		
Country	UK	Manufacturer	BAE	Manufactured	1966 – 1971														
Engine	Gas, 240 hp	Weight (kg)	15,280	Max. Speed	52 kmh														
Crew	2 + 10	Weapons	7.62mm MG, 2X3 smoke Launchers																
	<p>M113 A2 Family</p> <table border="1"> <thead> <tr> <th>Country</th> <td>US</td> <th>Manufacturer</th> <td>FMC</td> <th>Manufactured</th> <td>1974 – 2004</td> </tr> </thead> <tbody> <tr> <th>Engine</th> <td>Diesel, 275 hp</td> <th>Weight (kg)</th> <td>11,740</td> <th>Max. Speed</th> <td>60 kmh</td> </tr> <tr> <th>Crew</th> <td>2 +11</td> <th>Weapons</th> <td colspan="3">.50 M2 MG, 2 X 4 Smoke Launchers</td> </tr> </tbody> </table> <p>The museum has several M113A2s on display:</p> <ul style="list-style-type: none"> M113A2 US Original M113A2 M113A2 Canadian The Canadian versions of the M113A has wire cutters, turn signals, and external gas tanks. M577 “Queen Mary” Command and Control. Raised Roof M113 TUA TOW Under Armour. Has launcher on roof for TOW anti-tank missiles. 	Country	US	Manufacturer	FMC	Manufactured	1974 – 2004	Engine	Diesel, 275 hp	Weight (kg)	11,740	Max. Speed	60 kmh	Crew	2 +11	Weapons	.50 M2 MG, 2 X 4 Smoke Launchers		
Country	US	Manufacturer	FMC	Manufactured	1974 – 2004														
Engine	Diesel, 275 hp	Weight (kg)	11,740	Max. Speed	60 kmh														
Crew	2 +11	Weapons	.50 M2 MG, 2 X 4 Smoke Launchers																
	<p>CVR-T Family</p> <table border="1"> <thead> <tr> <th>Country</th> <td>UK</td> <th>Manufacturer</th> <td>Alvis</td> <th>Manufactured</th> <td>1974 – 1985</td> </tr> </thead> <tbody> <tr> <th>Engine</th> <td>Gas, 190 hp</td> <th>Weight (kg)</th> <td>Varies</td> <th>Max. Speed</th> <td>80 kmh</td> </tr> <tr> <th>Crew</th> <td>2 or 3</td> <th>Weapons</th> <td colspan="3">Depends on Variant</td> </tr> </tbody> </table> <p>The Museum has several CVRTs on display:</p> <ul style="list-style-type: none"> FV101 Scorpion 76mm Low Pressure Gun. FV102 Striker Swingfire ATGM FV103 Spartan APC FV104 Samaritan Ambulance FV105 Sultan Command and Control. FV106 Samson Recovery FV107 Scimitar 30mm Rarden Cannon Sabre Fox turret on Scorpion hull. Rarden 30mm cannon 	Country	UK	Manufacturer	Alvis	Manufactured	1974 – 1985	Engine	Gas, 190 hp	Weight (kg)	Varies	Max. Speed	80 kmh	Crew	2 or 3	Weapons	Depends on Variant		
Country	UK	Manufacturer	Alvis	Manufactured	1974 – 1985														
Engine	Gas, 190 hp	Weight (kg)	Varies	Max. Speed	80 kmh														
Crew	2 or 3	Weapons	Depends on Variant																



M551 Sheridan

Country	US	Manufacturer	Cadillac	Manufactured	1966 – 1970
Engine	Diesel, 300 hp	Weight (kg)	15,200	Max. Speed	70 kmh
Crew	2	Weapons	152mm Main Gun, .50 cal MG, 7.62mm MG, Shillelagh Missile		



Panzer III Ausf J

Country	Germany	Manufacturer	Daimler-Benz	Manufactured	1939 – 1943
Engine	Gas, 296 hp	Weight (kg)	23,000	Max. Speed	40 kmh
Crew	5	Weapons	50mm cannon, 2-3 7.92 Machine Guns		

This vehicle is a very precise reproduction built from original engineering drawings and made of parts cast from originals.



Sd.Kfz 251 (Hanomag)

Country	Germany	Manufacturer	Hanomag	Manufactured	1939 – 1945
Engine	Gas, 99 hp	Weight (kg)	7,810	Max. Speed	52 kmh
Crew	2 + 10	Weapons	Dependant on Variant		

These are vehicles made after the war in Czechoslovakia using original parts and on the original line. They have been retrofitted to German standards.



Jagdpanzer 38 (Hetzer)

Country	Germany	Manufacturer	CMM	Manufactured	1944 – 1945
Engine	Gas, 158 hp	Weight (kg)	15,750	Max. Speed	42 kmh
Crew	4	Weapons	75mm main gun, 7.62mm MG		

This vehicle was made in the same factory with original parts but was sold to Switzerland after WW2 as a G13. It has been retrofitted back to original German specifications.



M113A3 TLAV (Tactical Light Armoured Vehicle) Family

Country	Canada	Manufacturer	General Dynamics	Manufactured	2001 – 2006
Engine	Diesel, 400 hp	Weight (kg)	15,000	Max. Speed	67 kmh
Crew	3 + 2	Weapons	1 .50 cal MG and 7.62MG or 1 .50 cal MG		

The Museum has two TLAVs in our collection. One is the Convoy and Security version with the mounted turret. The second is the Combat Engineer version with auger and dozer blade.



M3A1 Stuart

Country	US	Manufacturer	Cadillac	Manufactured	1941 – 1943
Engine	Gas, 240 hp	Weight (kg)	1,420	Max. Speed	58 kmh
Crew	4	Weapons	37mm gun, 3 X .30 cal MG		



M24 Chaffee

Country	US	Manufacturer	Cadillac	Manufactured	1944 – 1945
Engine	Gas, 440 hp	Weight (kg)	18,700	Max. Speed	56 kmh
Crew	4	Weapons	75mm Main Gun, .50 cal MG, 2 X .30 cal MG		



M4A2 (76)W HVSS Sherman

Country	US	Manufacturer	Many	Manufactured	1940 – 1945
Engine	Gas, 410 hp	Weight (kg)	30,000	Max. Speed	35 kmh
Crew	5	Weapons	76mm cannon, 2X 7.62mm MG		



T34/85

Country	Soviet Union	Manufacturer	Many	Manufactured	1940 – 1945
Engine	Diesel, 500 hp	Weight (kg)	32,000	Max. Speed	48 kmh
Crew	5	Weapons	85mm cannon, 2X 7.62mm MG		



Centurion

Country	UK	Manufacturer	Leyland	Manufactured	1945 – 1962
Engine	Petrol, 600 hp	Weight (kg)	52,000	Max. Speed	35 kmh
Crew	4	Weapons	20 pdr or 105mm Main Gun, 7.62mm MG		



BMP-1

Country	Soviet Union	Manufacturer	Various	Manufactured	1966 – 1982
Engine	Diesel, 300 hp	Weight (kg)	13,200	Max. Speed	65 kmh
Crew	3 + 8	Weapons	73 mm LP gun, ATGM Launcher (AT-3 Sagger), 7.62 mm MG		

Zone 5 – Gift Shop, Donations Zone and Exit

If you ordered at the entrance, you can pick up your order at the Gift Shop. If you didn't, do not worry; you can still order online on the website – tankmuseum.ca. We are accepting donations on the way out but if you do not have cash but would still like donate to help us keep history in motion – you can donate on our website – tankmuseum.ca.

Thanks to our Sponsors

This event could not have come together without the support of our community sponsors and partners



World of Tanks
Wargaming.net

worldoftanks.com



CDN Protection

cdnprotection.com



**Signarama Oshawa and Signarama
Peterborough**

signarama.com



Hagerty Insurance

www.hagerty.ca



Brock Street Brewery

www.brockstreetbrewing.com



Our Community Partners

The City of Oshawa

oshawa.ca



The Region of Durham

www.durham.ca

Our Neighbors



**420 Wing (Oshawa) - Royal
Canadian Air Force Association**



Oshawa Executive Airport